



# FAN INFORMATION

**27.03.2026**

KICK-OFF: 20.45 PM

**THE NETHERLANDS — NORWAY**

FRIENDLY

JOHAN CRUIJFF ARENA, AMSTERDAM



# WELCOME!

Welcome to the Johan Crujff ArenA for the friendly match between the Netherlands and Norway! As your hosts, the KNVB is excited to share this special evening of football with you. Let's create an unforgettable atmosphere together, filled with sportsmanship and passion. May the best team win, and let's enjoy our beautiful game! Thank you for your support, and we hope you have a fantastic time here in Amsterdam!

Hereby we present to you the guide that contains the most important and practical information to facilitate your stay in Amsterdam.

# AMSTERDAM

## PLACES TO VISIT AND TIPS

### The Jordaan

This is the most beautiful neighbourhood in Amsterdam. Enjoy the atmosphere and the charming architecture.

### Museumplein

The Museumplein is the square with the most important museums of Amsterdam. Enjoy the Rijksmuseum or the Van Gogh Museum.

### Canal tours

Get to know something about the city of Amsterdam by doing a canal tour. There are multiple companies that provide canal tours, you can find a lot of them across the central railway station.

### Stadium Tours

There are NO stadium tours available on the day before Matchday and the Matchday itself. Tours starting again from the day after.

### Emergency

Tel: 112 is the emergency number for the emergency services in The Netherlands. To contact the police for non urgent cases, please contact 0900-8844 or +31 34 357 8844.

### Good to know

- Drinking alcohol in the streets of Amsterdam is not allowed.
- Being visibly drunk in public is not allowed.
- Using your mobile phone when cycling is not allowed
- Be aware of pickpockets.

# GETTING TO THE STADIUM

## Wizzymaps

Our interactive map of the stadium and its surroundings. Please use the tool [here](#).

## Public Transport

We strongly advise you to use public transport to get to the stadium. The fastest way to travel from and to the city centre is by using subway line 54 at [Strandvliet-Arena station](#). This station is located near entrance K.

Please schedule your journey via the [NS website](#) or via [9292](#). Use [OVpay](#) or use a ticket machine to buy your public transport tickets.



**ENTRANCE  
AWAY SECTOR**



**PUBLIC TRANSPORT HUB  
'BIJLMER ARENA'**



**NOTHING LIKE ORANGE**



**METROSTATION  
'STRANDVLIET'**

RECOMMENDED FOR AWAY SECTOR



**JOHAN CRUIJFF ARENA**

JOHAN CRUIJFF BOULEVARD 1  
1101AX AMSTERDAM

**TICKET INFO  
POINT**

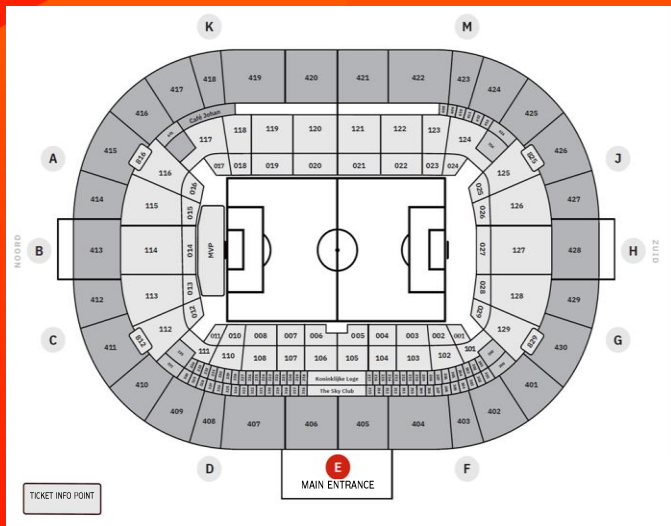
**VIP  
HOSPITALITY**

**ENTRANCE P1  
VIP PARKING**

# JOHAN CRUIJFF ARENA

One of the stadiums in the Netherlands that hosts international matches of the Dutch National team. The Johan Crujff Arena is home base of AFC Ajax but also the place to watch and admire the Dutch national team for over 25 years now.

This match will be played in the biggest stadium of the Netherlands, the Johan Crujff Arena in Amsterdam:



# GENERAL STADIUM INFORMATION

## Opening time

The stadium will be open 2H prior to kick-off (18.45H). Please be advised to arrive early at the stadium: 19.15h. at the latest.

## Home Support Only

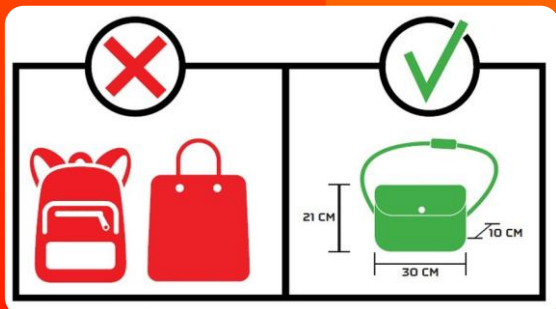
Clubshirts or any other club badges are prohibited. Support your country!

## Food & Drinks

There is no possibility to bring your own food and drinks inside the stadium. Beer will be sold in the stadium. In the Netherlands it is allowed to bring beer into the stands.

## Bags

Bags larger than A4-size (30x21x10cm) are not allowed into the stadium. There are no storage facilities or lockers at the venue.



## PIN-Only

The Johan Crujff ArenA is a cashless stadium, this means that you can only pay by using debitcard, creditcard or mobile pay options.

## Flags

Flags or banners need to be impregnated. Please show the fire certificate upon arrival. Flags with religious/political nature will not be permitted.

## Smoking

Smoking is prohibited inside the stadium.

## Fireworks

Setting off fireworks is prohibited.

## Drones

The Johan Crujff ArenA is located in a no-fly zone. It is therefore prohibited to fly drones in, above, or in the vicinity of the stadium. For detailed information about the areas where drone flights are permitted: <https://map.godrone.nl/>

The complete rules of the stadium can be found [here](#).



## Hardcopy-tickets

Please bring your hardcopy ticket to the stadium entrance.



# AWAY SECTOR

The entrance for the away sector is gate K. The away fans are located in sector 416 or 417. To ensure a smooth ingress, away fans are advised to arrive at the stadium early, 19:15h. at the latest!



**PLEASE NOTE: BE AROUND THE STADIUM AT THE LATEST 90 MINUTES PRIOR TO KICK-OFF (19:15H)**



## Ticket info point

- Is facilitated next to entrance D (left handed from the main entrance)

## Banners and Flags

- Banners and flags needs to be impregnated when larger then 1m / 1m. Please show the fire certificate upon arrival.
- At the entrances each flag and banner will be checked by the stewards.
- The space for displaying them is limited.

## F&B and Toilet facilities

- The toilets and catering facilities are on the concours behind the away sector.
- Beer will be sold in the stadium. In the Netherlands it is allowed to bring beer into the stands.

## After Final Whistle

- Normally there is no hold back procedure. In case of a hold back procedure the Security Officer or SLO will be informed accordingly by the KNVB.
- Excellent public transport service to the city centre or airport.



# VIEW AWAY SECTOR





**HAVE A GOOD  
TIME!**

**HA DET GØY!**